

What is the model number of my WinBook computer?

There are two methods for determining the exact model of WinBook that you have purchased.

1

The first method is to turn the computer over and view the label on the bottom of the unit.

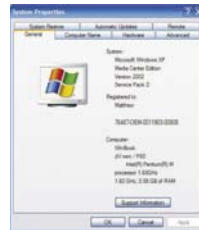
The model number is composed of the first 4 digits of the unit serial number.



2

The second method is to view the General System Properties dialog box within Windows. To access the system properties window perform the following steps:

1. 'Left click' on the Start Menu button found in the lower left hand corner of the display.
2. 'Right click' on the My Computer icon to bring up an action list, then 'left click' on properties to open up the General System Properties window.
3. The series designator is located to the right of the WinBook logo.



Important numbers to keep for future reference

Serial number

Windows Product Key

WINBOOK 1 YEAR LIMITED WARRANTY

This WinBook Computer ("the Product") is warranted to you, the original purchaser, to be free from defects in materials and workmanship for a period of one full year from the original date of purchase.

Should the Product fail to conform to this warranty during the warranty period, we or our authorized agent will repair the Product or, at its option, replace the Product with a comparable product. Repairs or replacements may be made using items that are new or which have been manufactured from new, used, reconditioned or re-manufactured parts. If a product or part is no longer available its replacement will meet or exceed the specifications of the original. A replacement Product will assume the remaining warranty of the original Product or 90 days, whichever is longer.

This Limited Warranty is transferable within the warranty period as long as all other provisions stated herein are met.

Exclusions

This Limited Warranty covers normal use. Preventative maintenance is not included. We do not warrant and will not be held responsible for damages or loss resulting from a cause other than defects in materials or workmanship, including without limitation damage or loss caused by: neglect, accident, abuse, peripheral equipment, or servicing or modifications by anyone other than an authorized service center; transit of equipment to service center for service, return or evaluation; any natural disaster, including flood, fire, earthquake, or lightning; or electrical surges or use of improper power sources.

Items attached to or added to the Product after sale may be removed at the Technician's discretion prior to service. Such items will not be reinstalled in the original or replacement Product unless requested in writing, and re-installation will be made at normal service rates and at the Technician's discretion. We are not responsible for repairs or testing of non-covered items.

Our liability under this Limited Warranty shall be limited solely to repair or replacement as provided above, and we assume no risk of, and shall not in any case be liable for, any special, incidental, consequential or punitive damages, whether arising from breach of warranty or contract, negligence or any other legal theory, including, without limitation, loss of goodwill, profits or revenue, loss of use of the Product or any associated equipment, cost of capital, cost of any substitute equipment, facilities or services, downtime costs, or claims of any part dealing with the Purchaser.

Our employees and agents are not authorized to make modifications to this Limited Warranty, or additional warranties; accordingly, additional statements, whether oral or written, do not constitute warranties, are not binding on us, and should not be relied upon by the Purchaser.

This Limited Warranty allocates the risks of Product failure between seller and buyer as authorized by the Uniform Commercial Code and other applicable law. Product pricing reflects the allocation of risk and the limitations of liability contained in this statement.

THIS ONE-YEAR LIMITED WARRANTY IS EXCLUSIVE AND IS IN LIEU OF ALL OTHER WARRANTIES, OTHER THAN WARRANTY OF TITLE WHETHER ORAL OR WRITTEN, EXPRESSED OR IMPLIED, INCLUDING THE WARRANTIES OF MERCHANTABILITY AND OF FITNESS FOR A PARTICULAR PURPOSE.

Some states do not allow limitation on how long an implied warranty lasts or do not allow the exclusion or limitation of incidental or consequential damages, so any such limitation or exclusion may not apply to you. This warranty gives you specific legal rights. You also have other rights, which may vary from state to state. Seller reserves the right to change its warranty policy at any time for all products distributed after the date of such change in warranty.

To obtain Service under this Limited Warranty

To obtain service under this Limited Warranty merchandise must be returned and received within the warranty period and be accompanied by proof of purchase.

If you ship the Product to us for service, we will not be responsible for shipping charges, loss or damage in transit, shipping containers or packing supplies. You are responsible for all shipping materials should the original packing materials not be available. Before sending the Product for service, you must first contact the store you made the purchase at for an RMA number.

If you purchased the Product from a retail outlet, you may bring it back to the store for repair or call WinBook Tech support to begin the RMA process. Retail Service Department hours are Monday - Saturday 10am to 9pm, Sunday hours vary by store.

For WinBook Tech Support, please call: 800-468-1225, Monday - Friday 9am-9pm EST.
For WinBook Customer Support, please call: 800-468-1633, Monday - Friday 9am-9pm EST.

The warrantor of this Product is International Products Sourcing Group, Inc. (IPSG), the distributor. Contact us at www.ipsgproducts.com to register your product.

Availability of Extended Service Agreement

An extended service agreement that protects against defects in materials and workmanship in the Product for one or more years after expiration of this Limited Warranty is available for purchase from the reseller.

Getting Started with the WinBook J1V mini

- > Quickstart Guide
- > Recovery Options
- > Warranty



WinBook®
Critically Proven.

Congratulations and thank you for purchasing a WinBook.

Follow these step-by-step instructions to begin using your WinBook.

Do

• Save this Quickstart Guide, all manuals, and any other software CDs for future reference. Save the carton and the packing materials in case you ever have to store or ship your system.

• Use a quality, UL-approved surge protector or power strip to guard against power surges.

Don't

• Don't supply power to the computer until all cords are connected.

www.winbook.com
www.winbookcorp.com
1-800-468-1225

Quickstart Guide

Read First

Don't attempt to install any additional hardware into your new system until your system has been turned on for the first time and the setup process has been completed.

Prepare your work space

- Don't place your computer near a sunlit window. Excessive heat will shorten the life of a computer.
- Don't use your computer in areas of excessive dust, humidity or temperature.



Connect the AC Adapter

The first time you use your WinBook, connect the AC power adapter.

- Connect the power cable to the AC adapter.
- Connect the AC adapter to the DC-IN jack of the computer.
- Connect the plug end of the power cable to an electrical outlet.



Attach the Mouse, Keyboard and Monitor

Locate the USB ports and the DVI port on the back of the computer. Connect the mouse and keyboard into each USB port and the monitor to the DVI port.



Power up and Windows XP setup

Locate the power button. Press and hold the power button until the power light comes on.

Windows XP setup

Follow the screen prompts for setting up Windows XP.



Finding Help resources

For help with any questions about your WinBook computer or Windows XP, refer to the Help and Support Center within Windows.

Additional assistance can be found at www.winbookcorp.com

Using the Help and Support Center

Obtaining access to the Help and Support Center is just a key press or mouse click away. From the Windows desktop, press the [F1] key in order to bring up the Help and Support Center. Alternatively you can click once on the Start Menu and then select Help and Support.



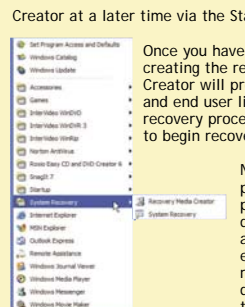
Creating your own Recovery CD/DVD set

Your WinBook has a program installed that will allow you to create a set of system recovery CD's or DVD's should you encounter corrupted software or a problem with the hard disk drive. This recovery set will allow you to restore your WinBook to the factory shipping hard drive image. It will not recover any programs or data files that were installed by the end user.



The first time you boot the computer you will be prompted to create a recovery set.

If you don't have blank media or would rather wait for a more opportune moment to create the recovery set, you can manually run the Recovery Media Creator at a later time via the Start Menu.



Once you have decided to go forward with creating the recovery set, the Recovery Media Creator will provide important information and end user license agreements regarding the recovery process. Follow the on-screen prompts to begin recovery creation.

NOTE! During the recovery process the hidden recovery partition located on the hard drive will temporarily be viewable as a drive letter. Once the recovery process has completed, the recovery partition warning window will automatically close and the recovery partition will return to its original hidden status.

Depending on the optical drive configuration of your WinBook, the Recovery Media Creator will present options for writing the recovery set to recordable CD or DVD media. Select the media type that you want to burn the recovery set to. Follow the on-screen prompts and insert blank media as requested by the program.

NOTE! The recovery media creator program does not support writing to re-writable media such as CD-RW, DVD-RW or DVD+RW. Any attempts to record to unsupported formats will result in the program stating that no valid media has been inserted into the optical drive.

After each recovery CD/DVD is created, the program automatically runs a CRC check to verify the integrity of the burn. If a CRC check fails, the program will prompt you to insert a new piece of media until the burn is successful. Once the complete set has been successfully validated, the program will terminate.



Congratulations! You have successfully created a recovery CD/DVD set for your WinBook notebook.

NOTE! Due to license restrictions you will only be able to create one set of recovery media. The Recovery Media Creator program automatically refuses any future attempts to create recovery media after the 1st set has been successfully created. Please contact your WinBook dealer or WinBook technical support at www.winbookcorp.com for any further recovery media needs.



Recovery Options

There are two methods for restoring factory image software to the hard drive. If you have created the recovery set, you can place the 1st CD/DVD into the optical drive and boot off of this disc to begin the recovery process. Alternatively, you can start the recovery process built into the hard drive image by pressing the F10 key while the three second countdown is displayed on the screen during system boot. No matter the method in which you have started the recovery console, the recovery options are the same.

Before you do a System Recovery, try Windows Non-Destructive System Recovery first. You may be able to "Roll-back" without needing to reinstall software.

Figure A

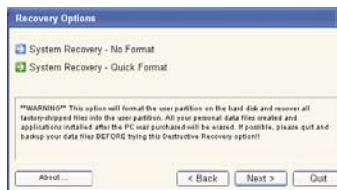


Figure B



Option 1 Non-Destructive System Recovery

Non-Destructive System Recovery will recover the original software to your hard drive without formatting it first. This process preserves data files on your hard drive but requires you to reinstall any software not originally on the hard drive.

Steps for Option 1, Non-Destructive System Recovery

1. Turn on your computer. Immediately after the WinBook logo is displayed, a 3 second countdown message will appear on the screen as follows: "Press F10 to start recovery".
2. Press the F10 key before the countdown expires to start the recovery console.
3. Read the End User Notice concerning the operation of the recovery software and click on the 'I Agree' button to continue or the 'I disagree' button to cancel the recovery process.
4. The recovery process defaults to "Non-Destructive System Recovery." If this is what you want, press the "Next" button to continue.

5. The following screen explains that Windows XP has an option to repair itself by going back to a point where the operating system was working properly.

This is an option that works well with drivers or other software programs that may have caused instability in the operation of Windows, for more information see the Windows Help file.

6. The next screen displays the status of the recovery process.

7. After the recovery process has completed, press the "Restart" button to reboot the computer into the newly recovered operating system.

Congratulations you have recovered your system!

Option 2 System Recovery Quick Format

System Recovery Quick Format will first format your hard drive and all data on the drive will be lost. Again all software not originally on the hard drive must be reinstalled.

Steps for Option 2, System Recovery Quick Format

1. Turn on your computer. Immediately after the WinBook logo is displayed, a 3 second countdown message will appear on the screen as follows: "Press F10 to start recovery".
2. Press the F10 key before the countdown expires to start the recovery console.
3. Read the End User Notice concerning the operation of the recovery software and click on the 'I Agree' button to continue or the 'I disagree' button to cancel the recovery process.
4. The recovery process defaults to "Non-Destructive System Recovery." To perform a "System Recovery-Quick Format," press the "Advanced Options" button at the left to continue.
5. The following screen will show that "System Recovery-No Format" is pre-selected (green arrow) and you must click on "System Recovery-Quick Format" to begin the process.

6. The following screen explains that Windows XP has an option to repair itself by going back to a point where the operating system was working properly. (Figure B)

This is an option that works well with drivers or other software programs that may have caused instability in the operation of Windows, for more information see the Windows Help file.

7. To continue with "System Recovery Quick Format" press "Yes" button.

This is the FINAL WARNING that all data on the hard drive will be lost if you continue past this point. To continue and format the hard drive press the "Yes" button.

8. The next screen displays the status of the format process.

9. The next screen displays the status of the recovery process.

10. After the recovery process has completed, press the "Restart" button to reboot the computer into the newly recovered operating system.

Congratulations you have recovered your system!

Press the "Next" button to continue. (Figure A)