



WinBook Jiv mini

# User Manual

#### Preface

© Copyright 2006; All Rights Reserved.

The information in this document is subject to change without prior notice in order to improve reliability, design and functionality. This manual does not represent a commitment on the part of the manufacturer.

In no event will the manufacturer be liable for direct, indirect, special, incidental, or consequential damages arising out of the use or inability to use the product or documentation, even if advised of the possibility of such damages.

This document contains proprietary information protected by copyright. All rights are reserved. No part of this manual may be reproduced by any mechanical, electronic, or other means in any form without prior written permission of the manufacturer.

#### Limitation of Liability

While reasonable efforts have been made to ensure the accuracy of this manual, the manufacturer and distributor assume no liability resulting from errors or omissions in this manual, or from the use of the information contained herein.

#### Notices

##### *Federal Communications Commission Radio Frequency Interference Statement*

This equipment has been tested and found to comply with the limits for a Class B digital devices, pursuant to Part 15 of the FCC Rules. These limits are designed to provide reasonable protection against harmful interference in a residential installation. This equipment generates, uses, and can radiate radio frequency energy and if not installed and used in accordance with the instruction manual, may cause harmful interference to radio communications. However, there is no guarantee that interference will not occur in a particular installation. If this equipment does cause harmful interference to radio or television reception, which can be determined by turning the equipment off and on, the user is encouraged to try to correct the interference by one or more of the following measures:

- Reorient or relocate the receiving antenna
- Increase the separation between the equipment and receiver
- Connect the equipment into an outlet on a different circuit from that to which the receiver is connected
- Consult the dealer or an experienced radio TV technician for help

#### Canadian DOC Notice For Class B Computing Devices

This Class B digital apparatus meets all requirements of the Canadian Interference – Causing Equipment Regulations.

#### Notices:

Changes or modifications not expressly approved by the party responsible for compliance could void the user's authority to operate the equipment. Shielded interface cables and a non-shielded AC power cord must be used in order to comply with emission limits. This equipment is designed to be used with a 65W external power supply.

The WinBook JiV mini contains no end user serviceable parts. Opening of the JiV mini case by non-authorized WinBook service personnel voids the manufacturer's warranty.

## Table of Contents

---

<b><i>Before you Start</i></b>	<b>3</b>
Conventions of the Manual	3
Safety Precautions	3
Things to remember before working on your Computer	4
- Let the JiV mini acclimate itself to room temperature	4
<b><i>Introduction</i></b>	<b>5</b>
Welcome to the JiV mini	5
Hardware Inventory	5
Top Side View	5
Front View	6
Rear View	6
<b><i>Getting Started</i></b>	<b>7</b>
Connecting to a Power Source	7
Connecting Devices to your JiV mini	7
- Video Display Connection	7
- LCD or CRT Monitor Connection	7
- Television Connection	7
- Keyboard and Mouse Connection	7
- Audio Connection	7
- Memory Stick, Card Reader, Memory Card Connection	8
- Expanding the JiV mini	8
Powering Up the JiV mini	9
- Software	9
- System Recovery Options	9
<b><i>Windows Help and Support</i></b>	<b>10</b>
Using the Help and Support Center	10
System Restore	13
Why use the Help and Support Center?	13
<b><i>Microsoft Windows XP Media Center Edition (MCE)</i></b>	<b>14</b>
Windows XP Media Center Edition (MCE)	14
<b><i>Specifications</i></b>	<b>15</b>

## Personal Inventory

This computer JiV mini is designed for years of productive and pleasurable computing. Use this section to keep notes about details of your purchase. Update this section when you add new options.

---

Date of Purchase:

---

Dealer's Name:

---

Phone:

---

Address:

---

E-Mail Address:

---

WWW Site:

---

Serial Number:

---

CPU Type:

---

Hard Disk Capacity:

---

Memory Capacity:

---

Optional Equipment:

---

## Before you Start

---

### Conventions of this Manual

This manual will assist you in getting the most out of your JiV mini computer. If you are an experienced user of computers and/or Microsoft's Windows operating systems, you may find it useful to read the Quickstart Guide that shipped with your JiV mini. If you are a less experienced user, it is recommended to completely read through the manual before using your JiV mini. For further detailed information about the JiV mini, consult the "Help and Support Center" found within Windows. Through the use of the Help and Support Center, you may find information about your computer and its operating JiV mini as well as tips and problem resolutions.

### Safety Precautions

This section is designed to assist you in identifying potentially unsafe conditions while working with this product. Required safety features have been installed in the computer to protect you from injury. However, you should use good judgment to identify potential safety hazards:

1. Read through all of the instructions for the JiV mini, including this User Manual and the Quickstart Guide.
2. Keep this User Manual for future reference.
3. Disconnect this equipment from the AC outlet before cleaning. Don't use liquid, detergent, or aerosol cleaners. Use proper cleaning solutions with a non-abrasive cloth. Apply the proper cleaning solutions or sprays only to the cloth, not directly on the computer or its components.
4. Keep this equipment away from high humidity and excessive moisture. Do not use the product near water, such as a bathtub, sink or swimming pool.
5. When using the JiV mini in a vertical position, use the stand to prevent the computer from falling over.
6. Only use the WinBook approved AC adapter for powering the JiV mini.
7. Do not attempt to open or service the JiV mini as this could damage the computer. For safety and warranty reasons, the equipment should only be opened by a WinBook qualified service technician.
8. Ventilation: The vents and other openings in the cabinet are designed for ventilation. Do not cover or block these vents and openings since insufficient ventilation can cause overheating and/or shorten the life of the product. Do not place the product on a bed, sofa, rug or other similar surface as the materials may block ventilation openings.
9. Heat sources: Keep the product away from heat sources such as radiators, heaters, stoves and other heat-generating products (including amplifiers).
10. For added protection during a lightning storm, unplug the device from the wall outlet and disconnect the antenna (if attached). This will prevent damage to the equipment due to lightning and power-line surges.

11. Do not store the JiV mini in an environment with conditions > 140 degrees Fahrenheit or < 32 degrees Fahrenheit as this may cause damage to the equipment.
12. The JiV mini was designed to be operated at ambient temperatures between 33 degrees Fahrenheit and 95 degrees Fahrenheit.
13. The sound pressure level at the operators position according to IEC 704-1: 1982 is equal to or less than 70 dB(A).
14. Power Cord Requirements
  - The power cord set used with the AC adaptor must meet the requirements of the country where you use the AC adaptor, whether it is 100-120 or 200-240 Vac. The following information explains the requirements for power cord set selection.
  - The cord set must be approved for the country in which it is used.
  - The appliance coupler must have a configuration for mating with a CEE22/EN6032/IEC 320 appliance inlet.
  - A. For U.S. and Canada:
    - The cord set must be UL Listed and CSA Certified.
    - The minimum specifications for the flexible cord are No. 18 AWG.
  - B. For Other Countries:
    - The cord set fittings must bear the certification mark of the agency responsible for evaluation in a specific country.
    - The flexible cord must be of a HAR (harmonized) type H03VV-F.
    - The cord set must have a current capacity of a least 2.5 Amperes and voltage rating of 125 or 250 Vac.
15. Do not use the AC adapter near open water or other liquids.
16. The input receptacle is used as the main disconnecting device.
17. Keep the area free of static electricity and magnetic fields as these can damage the computer or media.
18. Class 1 Laser product warning: This device utilizes a visible laser beam which may cause hazardous radiation if exposed. Do not attempt to disassemble the unit as the laser beam can be harmful if directed into the eye.
19. To reduce the risk of fire, only use No. 26 AWG or greater phone cords.

### Things to remember before working on your Computer

#### *Let the JiV mini acclimate itself to room temperature*

Your computer can easily operate under temperature extremes, but it doesn't like rapid changes in temperature such as moving from the cold outdoors to a warm office. Rapid changes in temperature can lead to condensation inside the case, possibly causing damage to the electronic components inside. It is recommended to allow 3 hours for the computer to adjust to the new ambient temperature before turning it on.



If your JiV mini arrives in cold weather, do not apply power to the computer or monitor until sufficient time has been allotted for the devices to adjust to room temperature.

## Introduction

### Welcome to the JiV mini

Congratulations on your purchase of the JiV mini as your Digital Home device. The JiV mini is one of the smallest Wintel (Windows®/Intel®) personal computers in the market today. The ultimate goal of the Digital Home is to enable consumers to access digital content from any device, anytime and anywhere, both inside the home and on-the-go. The JiV mini brings these capabilities to you in a sleek and light weight form factor that looks good in any room or scenario that you can dream of.

### Hardware Inventory

When you unpack your JiV mini, make sure that all items are present and in good condition. If anything is missing or damaged, contact Customer Service immediately.

The JiV mini box contains the following items:

- JiV mini computer
- AC power adapter with power cord
- This User Manual
- Quickstart Guide
- Phone cord
- CD/DVD burning software CD
- DVI-I to VGA adapter
- Windows MCE Remote Control
- (2) "AA" Alkaline batteries
- F-type cable adapter for the TV tuner

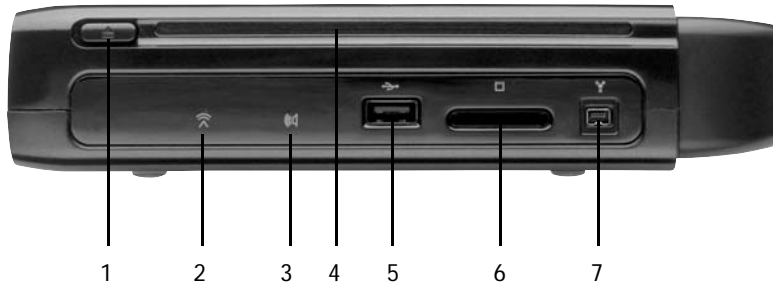
Note: The JiV mini does not ship with a keyboard, mouse or monitor. These items will need to be purchased separately.

### Top Side View



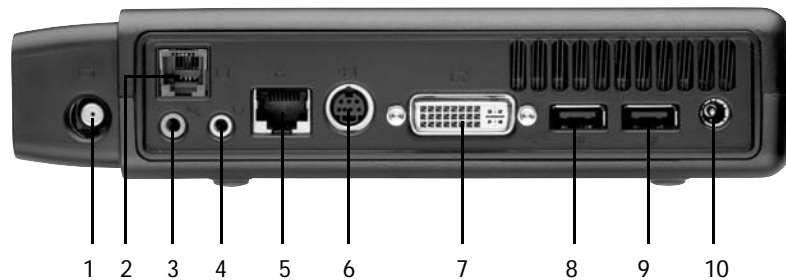
1. Ventilation Opening
2. Power Button

## Front View



1. Optical Drive Eject Button
2. 802.11abg Wireless Indicator
3. MCE Infrared Sensor
4. Optical Drive
5. USB 2.0 Port
6. CardReader
7. 1394A (Firewire) Port

## Rear View



1. TV Connector (NTSC)
2. Modem Port
3. Microphone Jack
4. Headphone (Line-out) Jack
5. LAN Connector
6. S-Video (TV-Out) Port
7. DVI (Digital Video Interface) Connector
8. USB 2.0 Port
9. USB 2.0 Port
10. DC-In Connector

## Getting Started

### Connecting to a Power Source

A universal AC adapter is provided to supply the Jiv mini with power. The adapter's AC input voltage can range anywhere from 100 to 240 volts, covering the standard voltages available in almost every country. The power cord for the AC adapter requires a three-hole grounded AC outlet.



**!** Only use WinBook approved AC adapter with your Jiv mini. Inferior/incorrect AC adapters may cause damage that will not be covered under the manufacturers warranty.

### Connecting Devices to your Jiv mini

#### *Video Display Connection*

The Jiv mini enables you to connect many different types of video display devices such as projectors, LCD or CRT monitors and TV's.

#### *LCD or CRT Monitor Connection*

The Jiv mini attaches to LCD and CRT monitors via the DVI-I output connector. Monitors with DVI digital input connectors can use standard DVI-D cables. Monitors with VGA analog input connectors must use a DVI-I cable with a DVI-I to 15-pin D-Sub adapter.

#### *Television Connection*

The Jiv mini can be connected to any television provided an S-Video or DVI input port is available on the TV.

#### *Keyboard and Mouse Connection*

The keyboard and mouse attach to any of the three USB Ports.

#### *Audio Connection*

The Output (Headphone) Jack provides analog stereo audio output as well as Dolby Digital 5.1 digital audio output when connected to a 5.1 capable receiver.



## Windows Help and Support

The Help and Support Center is your one stop shop for anything and everything that relates to Windows and your WinBook. Through this resource, you can find answers on a multitude of subjects such as basic windows operations, detailed problem resolutions, and specifications of your WinBook computer. Also found within this resource are applications that you can run to help maintain and troubleshoot your WinBook such as system restore, remote assistance, and system configuration utility. For further information on any item in this chapter, just type the keyword in the Search box of the Help and Support Center.

When connected to the Internet, the Help and Support Center becomes an even greater tool by expanding its capabilities in the following ways:

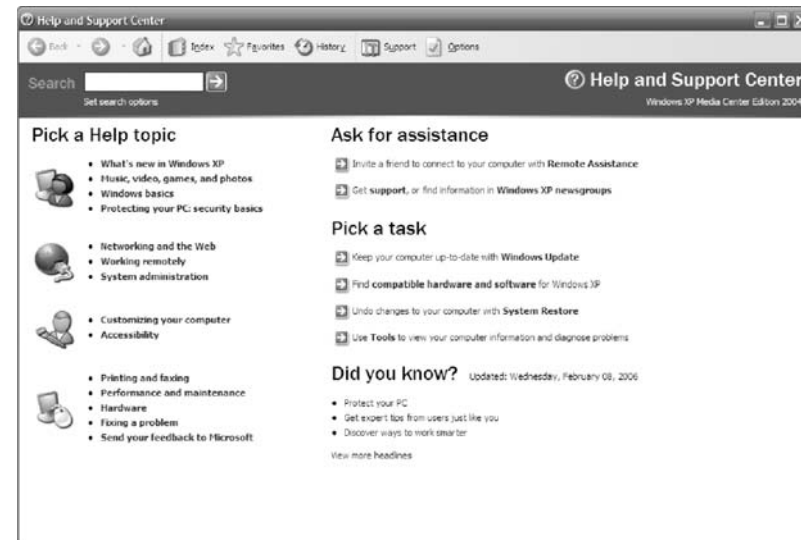
- Through the **Remote Assistance** feature, a 3rd party application technical support representative could connect to your computer with your permission, then see your files, control your mouse and keyboard, and chat online with you to discuss your problem.
- Through **Windows Update**, your computer can always be up to date with the latest patches and drivers from Microsoft. When connecting to Windows Update, your computer will be scanned, and the appropriate updates will be displayed for your unique installation of the operating system.
- Through the **Get Support** feature, you can access various sources of help and support information via newsgroups and manufacturer websites.

The resources supplied by the Help and Support Center focus only on your WinBook computer as well as the operating system installed. The Help and Support Center does not provide resources for any 3rd party programs or hardware that you may have installed. Refer to the manufacturer of your user installed hardware or software for help on their products.

### Using the Help and Support Center

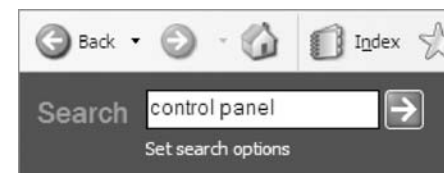
Obtaining access to the Help and Support Center is just a key press or mouse click away. From the Windows desktop, press the [F1] key in order to bring up the Help and Support Center. Alternatively you can click once on the Start Menu and then select Help and Support. Once activated, the Help and Support Center window will open up as depicted below. (Figure 2.1)

Figure 2.1: Help and Support Center Window



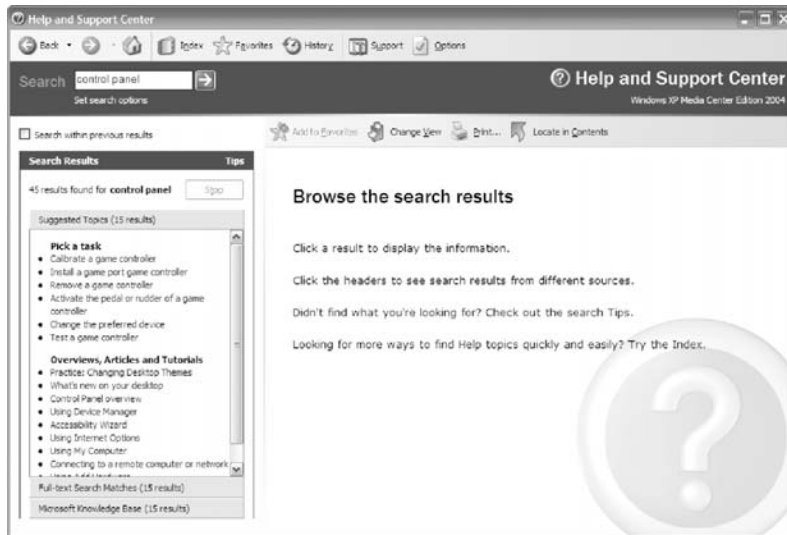
It is through this home page that you will find easy access to the many resources the Help and Support Center has to offer. Just click on the hypertext link of the topic that coincides with the question that you have. If you find that you are unable to bring up a resource for a particular question by clicking through the topic links, the Help and Support Center allows you to search its entire database through a comprehensive search utility. Click once on the blank search box in the upper left corner of the window and type in a keyword or keywords that the search engine will scan for. (Figure 2.2)

Figure 2.2: Help and Support Center Search Box



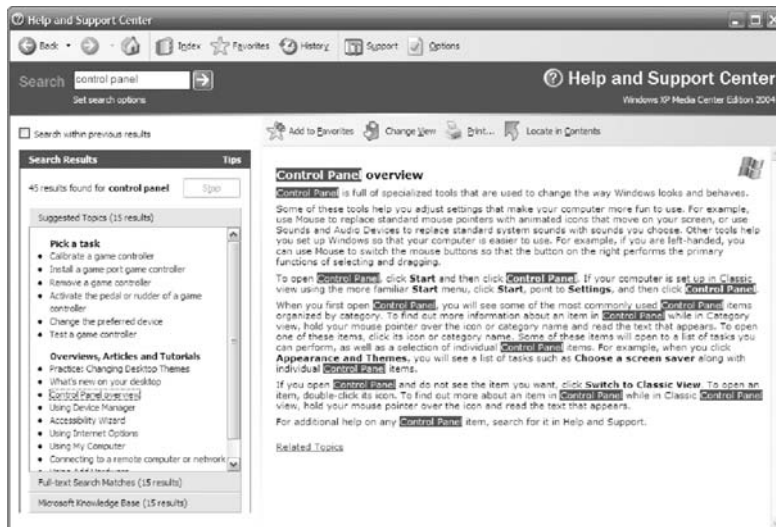
After a quick scan, the Help and Support Center will display any resources that match the keywords searched for. (Figure 2.3)

Figure 2.3: Help and Support Center Search Results



Click on one of the hypertext links of the Suggested Topics in order to display the information that you are looking for. (Figure 2.4)

Figure 2.4: Help and Support Center Main Setup Menu



## System Restore

One of the powerful utilities within the Help and Support Center is the System Restore utility. With this utility, you can recover from fatal errors that are the direct result of failed hardware or software installations. Your operating system automatically sets restore points whenever you install a new piece of software or add a new hardware device. If you find yourself in a situation in which your computer is malfunctioning after you have recently installed something, running System Restore from the Help and Support Center will allow you to revert back to a point before the installation occurred, thus protecting your valuable data and the integrity of your system.

## Why use the Help and Support Center?

- Most likely the answer to your question can already be answered within the Help and Support Center.
- The Help and Support Center gives you the user, the power to solve your own problem or answer your own question without having to rely on the traditional methods of support. (i.e. technical support phone call, surfing the Internet for answers)

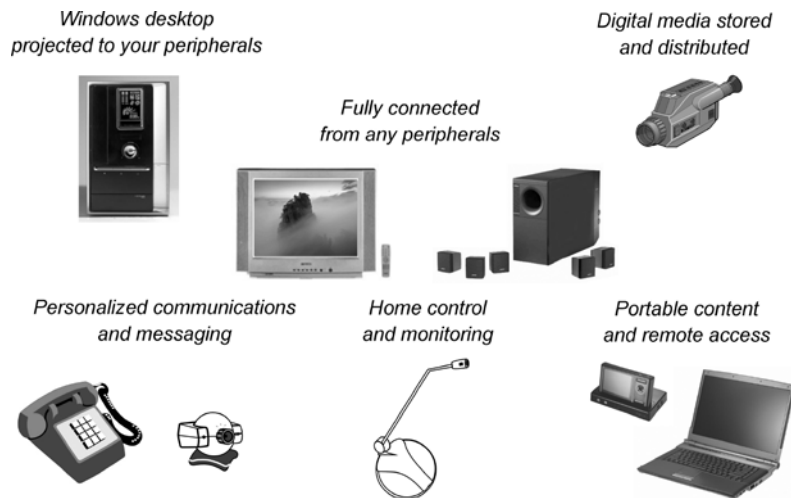
## Microsoft Windows XP Media Center Edition (MCE)

### Windows XP Media Center Edition (MCE)

The WinBook JiV mini ships with the Microsoft Windows XP Media Center Edition operating system. MCE not only provides standard computing functionality, but a complete software solution for the digital home. MCE allows you to enjoy any of your digital entertainment choices in any room of your home, using an elegant yet simple interface, combined with the power of the WinBook JiV mini to bring you the ultimate multimedia experience.



Further information on the functionality of MCE can be found within the Microsoft's Windows XP MCE User's Guide or the Help and Support Center.



## Specifications

### Detailed Specifications

#### Processor

- Intel® Yonah Core Duo/Solo, 2MB L2 Cache, 667MHz FSB
- Micro-FCPGA 478 socket

#### Operating System Compliance

- Microsoft® Windows® XP Media Center Edition 2005
- Microsoft® Windows® XP Professional Edition
- Microsoft® Windows® XP Home Edition
- Microsoft® Windows® Vista™ Capable

#### Core Logic

- Intel 945GM + ICH7-M (DH)

#### Memory

- Dual channel DDRII 400/533/667, memory support DMI 2GB/s link with south bridge
- Expandable 2 slots of 200pin SO-DIMM module; 2GB total memory capacity

#### Video & Graphics

- Intel 945GM internal graphics
- Intel Gen 3.5 Integrated Graphics Engine
- HDTV support 480p/720p/1080i/1080p

#### Hard Drive

- SATA HDD supported

#### Optical Drive

- 5.25" 12.7mm height CD-ROM/DVD-ROM/Combo Drive/DVD-RW/DVD+RW/DVD-Dual

#### Keyboard Controller

- ENE KB3910

#### LED Status Indicator

- Power, Wireless

#### Interface Ports

- S-video TV out port, DC input port for External AC adapter (2-pin DC jack), DVI-I port for external analog VGA monitor & external Digital monitor, USB 2.0 port x 3, MIC-In, headphone jack w/adaptor for 5.1 channel S/PDIF support, Fax/Modem (internal MDC module), GigaLAN port, IEEE 1394 mini-jack, Card Reader, SDVO DVI 1.0 support for External Digital Monitor

#### Built-in TV Tuner

- Mini PCI TV Tuner with Coaxial connector, support PAL, NTSC, SECAM Audio
- Integrated Audio
- High definition Audio Codec
- Support S/PDIF out

#### AC Adapter

- External universal type AC adapter, output maximum 65W

#### Communication

- Intel Pro/Wireless 3945ABG Mini-PCIe interface
- Intel Tekoa Giga LAN
- Built-in MDC + Bluetooth combo module, (V.92/56K + Blue core 1.2)

#### Dimension

- 9.05(L) x 7.77(W) x 1.65(H) inches

#### Weight

- JiV mini Weight: 2.59lbs
- Base Stand Weight: 0.34lbs

