

Quickstart Guide

Congratulations and thank you for purchasing your WinBook notebook.

Follow these step-by-step instructions to begin using your WinBook notebook.

WinBook[®]
Critically Proven.

Read First



Don't attempt to install any additional hardware into your new system until your system has been turned on for the first time and the setup process has been completed.

1 Prepare your work space

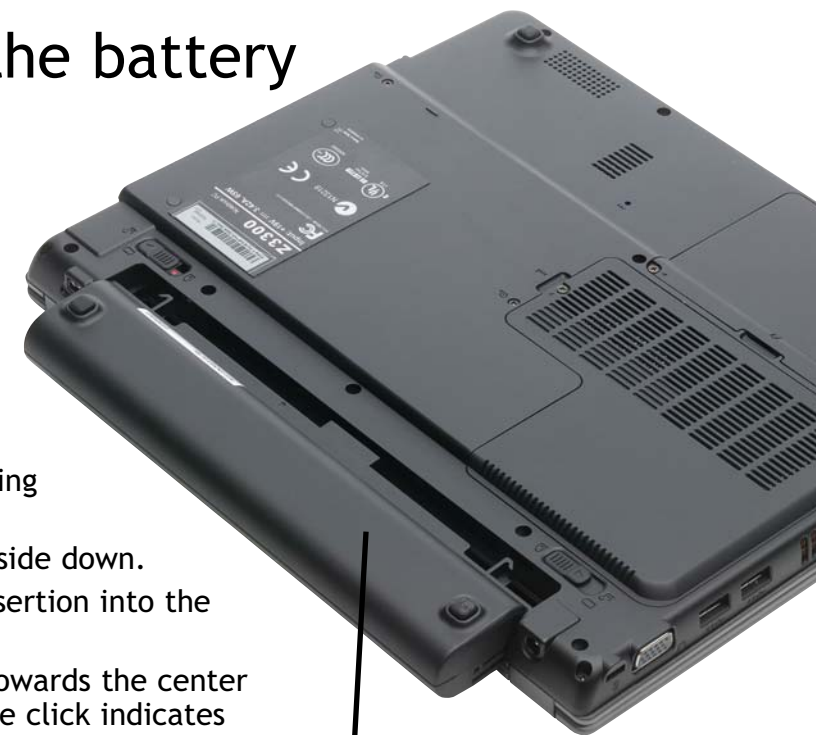


- Don't place your computer near a sunlit window. Excessive heat will shorten the life of a computer.
- Don't use your computer in areas of excessive dust, humidity or temperature.

2 Install the battery

The battery should be installed before starting your notebook for the first time. Remove the battery pack from the accessories box and install it into the system by following these instructions:

- Carefully turn the unit upside down.
- Line up the battery for insertion into the battery bay channel.
- Gently slide the battery towards the center of the unit until an audible click indicates that the latches have been secured.



X Series Battery

3 Connect the AC Adapter



The first time you use your WinBook notebook, use the AC power adapter to fully charge the battery.

- Connect the power cable to the AC adapter.
- Connect the AC adapter to the DC-IN jack of the notebook.
- Connect the plug end of the power cable to an electrical outlet.

4 Open the display



- Locate the display latch on the front of the notebook.
- Press in the latch to release the LCD display.
- Adjust the display to a comfortable viewing angle.

5 Power up and Windows XP setup



Power Button

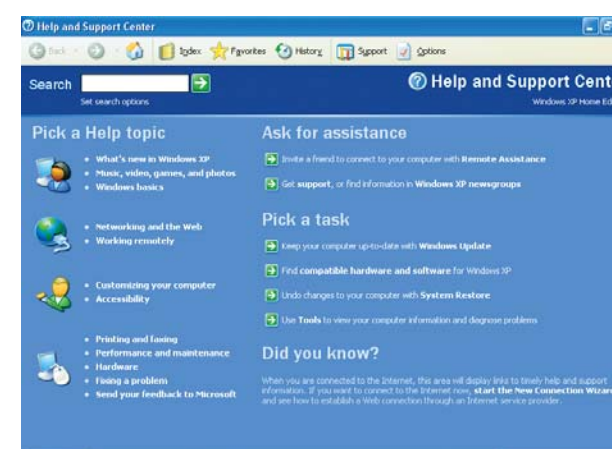
Locate the power button above the keyboard. Press and hold the power button until the power light comes on.

Windows XP setup
Follow the screen prompts for setting up Windows XP.

6 Finding Help resources

For help with any questions about your WinBook notebook or Windows XP, refer to the Help and Support Center within Windows.

Additional assistance can be found at www.winbookcorp.com



Using the Help and Support Center

Obtaining access to the Help and Support Center is just a key press or mouse click away. From the Windows desktop, press the [F1] key in order to bring up the Help and Support Center. Alternatively you can click once on the **Start Menu** and then select **Help and Support**.

- Do**
- Save this Quickstart Guide, all manuals, and any other software CDs for future reference. Save the carton and the packing materials in case you ever have to store or ship your system.
 - Use a quality, UL-approved surge protector or power strip to guard against power surges.

Don't • Don't supply power to the notebook until all cords are connected.

WARNING

Your WinBook notebook has been designed to be expandable. There are a number of components that can be installed by the user. Before opening the case, you should be aware that you can injure yourself and damage your computer if you do not perform the operations correctly. If you are not comfortable with upgrading components on your own, refer to the Help and Support Center or have a Service Technician perform upgrades for you.