

Congratulations and thank you for purchasing your WinBook notebook.

Follow these easy step-by-step instructions for quick installation and recovery of your WinBook notebook.

WinBook
TL Series

Quickstart and Recovery Guide

This computer has a program installed that will allow one set of system recovery CD's or DVD's to be made should corrupted software or a problem with the hard disk drive occur. This recovery set will restore this computer to the factory shipping hard drive image. It will not recover any programs or data files that were installed by the end user.

XP Recovery/Reinstall

- The first time the computer boots up there will be a prompt to create a recovery set. To run the Recovery Media Creator manually at a later time, click the **Windows Start button**, click on **All Programs**, click on **System Recovery**, and then click **Recovery Media Creator**.
 - Select **Yes** and then click **OK** to begin creating the recovery media.
 - The Recovery Media Creator will provide important information and end user license agreements regarding the recovery process. Follow the on-screen prompts to begin recovery creation.
 - Depending on the optical drive, the Recovery Media Creator will present options for writing the recovery set to recordable CD or DVD media. Select a media type and follow the on-screen prompts. Insert blank media as requested by the program.
- NOTE!** The Recovery Media Creator program only supports writing to CD-R and DVD+R media. The recovery media creator program does not support writing to re-writable media such as CD-RW, DVD-RW or DVD+RW. A "no valid media has been inserted into the optical drive" error will appear if unsupported media is used.
- After each recovery CD/DVD is created, the program will automatically verify the integrity of the burn. If the check fails, the program will prompt for a new piece of media until the burn is successful. Once the complete set has been successfully validated, the program will end.
 - Please label the recovery discs appropriately and keep them in a safe place for future use. Remember, only one set of recovery discs can be created. Once this is done, this option will disappear. Please contact technical support for any further recovery media needs.

Reinstalling XP

- There are two ways to run the recovery or from the recovery partition on the hard drive or from the recovery media.
 1. There are two ways to run the recovery partition — from the recovery media and then click **Next**.
 2. Please read the recovery agreement and then select "I agree" to continue. Choosing "I disagree" will cancel the recovery and restart the computer back into Windows.
 3. Select one of the recovery options and then click **Next**.
 - Non-Destructive System Recovery — This option will attempt a repair installation of Windows without removing data files and software. If this option is unsuccessful and there is data that needs to be recovered please try the System Recovery — No Format option next.
 - System Recovery No Format — (To access this option click the Advanced Options button). This option will recover Windows to its factory original condition while saving all of the data files to a folder on the hard drive. Any software and settings will need to be reinstated. All current files are moved to C:\My Old Disk Structure.
 - System Recovery Quick Format — (To access this option click the Advanced Options button). This option reinstalls Windows to its factory original condition. All data files and software will be deleted from the hard drive except for what came on the computer from the factory.
- The next screen explains that Windows XP has an option to repair itself by going back to a point where the operating system was working properly. This option runs from within Windows. Click **Yes** to continue reinstating Windows with the option previously selected or click **No** to restart the computer into Windows and run Windows System Restore.
- Change the recovery process as needed.
- Once the recovery process has been completed "Restart" will be displayed. Please remove the recovery disk and click "Restart". The computer will now restart to complete the process.

Note: If the "Please Wait" warning is displayed for more than one minute, please press **CTRL+ALT+DEL** to restart the computer.

Reinstalling Windows Vista

- Click on the **Windows Start button**, click on **All Programs**, and then click **Recovery Center**.
 - Click on the **Windows Start button**, click on **All Programs**, and then click **Recovery Center**. **NOTE!** Windows may warn you that an unidentified program (Recovery Manager) wants to access your computer. Please click "Allow" if this message appears.
 - Click on the **Factory Recovery external media option**. If the factory Recovery external media is not an option then the recovery media has already been created.
 - Click **Next**.
 - Insert a blank CD-R, DVD-R or DVD+R and then click **Next**.
- CDRW and DVD+R media is not supported. A "Media Invalid" error will appear if CDRW or DVD+R media is inserted.**
- The recovery center will detect the type of media that you inserted and prompt you with many options and then click **Next**.
 - If more than one (1) disc is required, insert the next disc when prompted and then click **Next**.
 - Please label the recovery discs appropriately and keep them in a safe place for future use. Remember, this option can only be performed once.

Vista Recovery/Reinstall

- There are two ways to run the recovery — from the recovery partition on the hard drive or from the recovery media.
 - Reinstalling from the recovery partition — restart the computer and tap F8 as it is starting. Choose the "Repair Your Computer" option from the Advanced Boot Options menu. The recovery can also be started from Windows by clicking the Windows Start button, clicking All Programs, and then click Recovery Center.
 - Select the Recovery option and then Yes to restart the computer now.
 - Reinstalling from the recovery disc — Insert the recovery media and restart the computer. The computer should automatically start from the recovery media.
 - At the "Welcome to System Recovery" screen, click **Next**.
 - Select one of the two options and then click **Next**.
- Recovery with automatic data backup** — This option will recover Windows to its factory original condition while saving all of the data files to C:\Backup. This option should be attempted if there is data on the drive that may be recoverable.
- Full factory recovery** — This option reinstalls Windows to its factory original condition.
- WARNING!** All data files and software will be deleted from the hard drive except what came on the computer from the factory.



- After confirming the chosen option Windows will be reinstalled. Click **Finish** when the recovery is complete to restart the computer.

Read First

Don't attempt to install any additional hardware into your new system until your system has been turned on for the first time and the setup process has been completed.

1 Prepare your work space

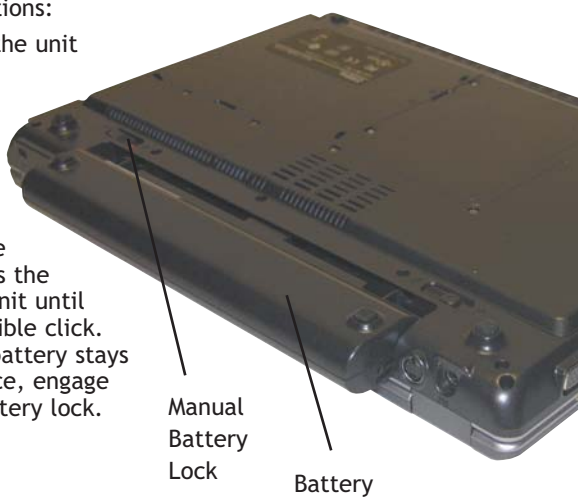


- Don't place your WinBook near a sunlit window. Excessive heat will shorten the life of a computer.
- Don't use your WinBook in areas of excessive dust, humidity or temperature.

2 Install the battery

The battery should be installed before starting your WinBook for the first time. Remove the battery pack from the box and install it into the system by following these instructions:

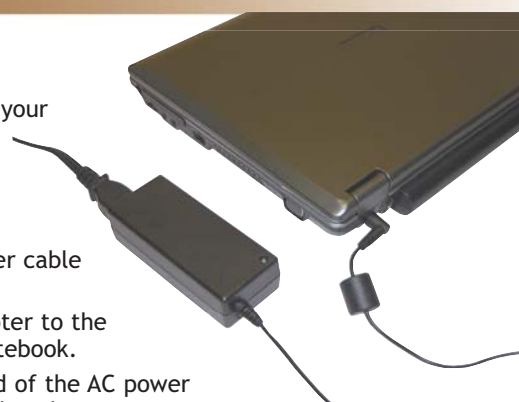
- Carefully turn the unit upside down.
- Line up the battery for insertion into the battery bay channel.
- Gently slide the battery towards the center of the unit until there is an audible click. To ensure the battery stays securely in place, engage the manual battery lock.



3 Connect the AC Adapter

The first time you use your WinBook, use the AC power adapter to fully charge the battery.

- Connect the AC power cable to the AC adapter.
- Connect the AC adapter to the DC-IN jack of the notebook.
- Connect the plug end of the AC power cable to an electrical outlet.



4 Open the display



- Press inwards on the display latch button to release the LCD screen from the locked position.
- With one hand holding the base securely, use the other hand to gently lift up the LCD screen to a comfortable viewing angle.

5 Power up and Windows setup



Locate the power button above the keyboard. Press and hold the power button until the power light comes on.

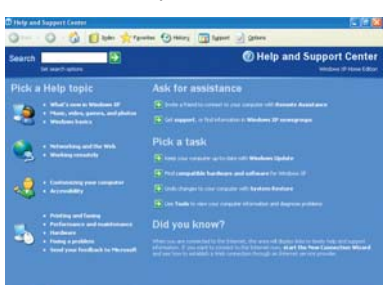
Windows Setup

Follow the screen prompts for setting up Windows XP or Vista.

6 Finding help resources

For help with any questions about Windows, refer to the Help and Support Center within Windows.

Windows XP Help screen



Windows Vista Help screen



Using the Help and Support Center

Obtaining access to the Help and Support Center is just a key press or mouse click away. From the Windows desktop, press the [F1] key in order to bring up the Help and Support Center. Alternatively you can click once on the Start menu and then select **Help and Support**. Once activated, the Help and Support Center window will open up as depicted above.

Additional assistance can be found at:

www.winbookcorp.com

Tech Support – 1-800-468-1225, M-F, 9am-9pm

Customer Service – 1-800-468-1633, M-F, 10am-7pm

Do

- Save this Quickstart Guide, all manuals, and any other software CDs for future reference. Save the carton and the packing materials in case you ever have to store or ship your system.

- Use a quality surge protector or power strip to guard against power surges.

Don't

- Don't supply power to the notebook until all cords are connected.

WARNING

Your WinBook notebook computer has been designed to be expandable. There are a number of components that can be installed by the user. Before opening access panels, you should be aware that you can injure yourself and damage your computer if you do not perform the operations correctly. If you are not comfortable with upgrading components on your own, have an authorized service technician perform upgrades for you.

What is the model number of my WinBook notebook computer?

Carefully turn the notebook over and view the label on the bottom of the unit.

The model number is composed of the first 4 digits of the unit serial number. (Example: TL30XXXXXXX)



Windows XP

The second method is to view the General System Properties dialog box within Windows. To access the system properties window perform the following steps:

1. 'Left click' on the Start Menu button found in the lower left hand corner of the display.
2. 'Right click' on the My Computer icon to bring up an action list, then 'left click' on properties to open up the General System Properties window.
3. The series designer is located to the right of the WinBook logo.

Windows Vista

1. 'Left click' Start menu button found in the lower left hand corner of the display.
2. Left click All Programs, Accessories, System Tools, and then System Information.
3. The series designer is located next to 'System Model' on the right side of the System Information window.